

CCP and Subscription Renewal

CLM v.1.8.3, Cyclone 2020, Cyclone REGISTER360 2020

3.27.20

Entitlement Update and Leica Cyclone Software Update

This is a quick guide that reviews updating your Entitlement IDs, CLM and Software after a CCP renewal and auto-renewal of a subscription.

Overview of Instructions

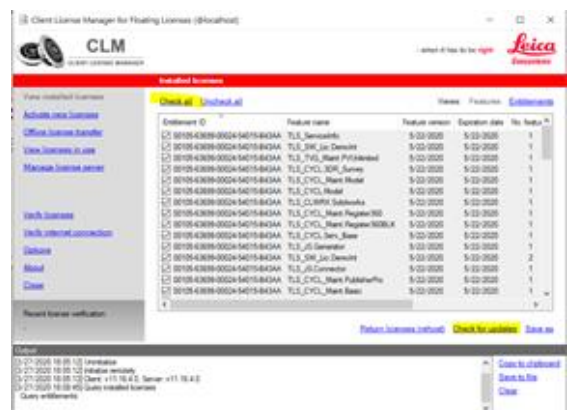
1. Updating EID in the CLM for Floating Licenses
2. Install CLM update on the Server and workstations
3. Update Cyclone to version 2020 on the workstations
4. Update Cyclone REGISTER 360 to version 2020 on workstations

1. Updating EID in the CLM for Floating Licenses

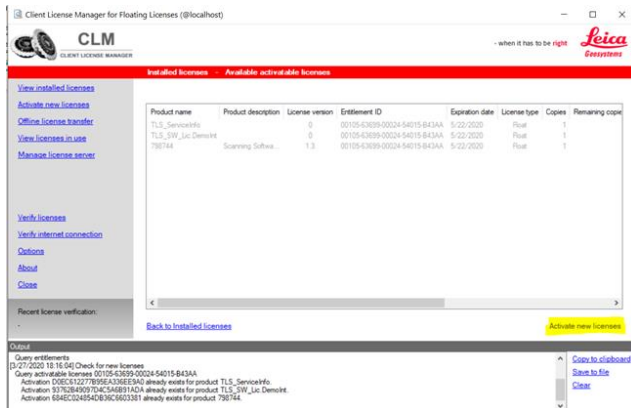
- Open the CLM for Floating Licenses on your License Server
- Select “View Installed Licenses”



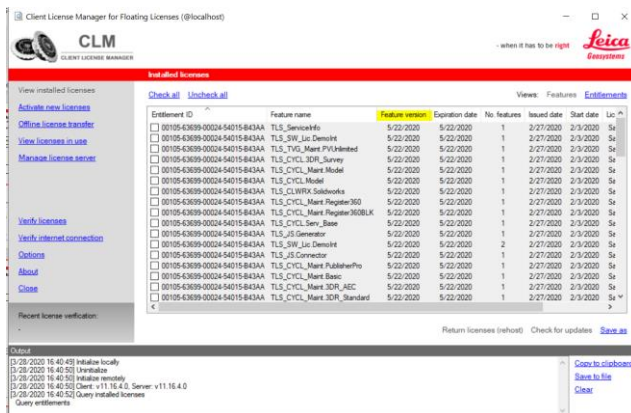
- Checked the Entitlement IDs that have been renewed
- Select “Check for updates”



- Activate the updates available on the bottom righthand side



Note: “Activate new licenses” should be highlighted in blue if you have updates available. Once you have activated the available licenses the feature version date for your licenses should change to the new CCP date or updated subscription date. Please see feature version example below under “View installed licenses”:



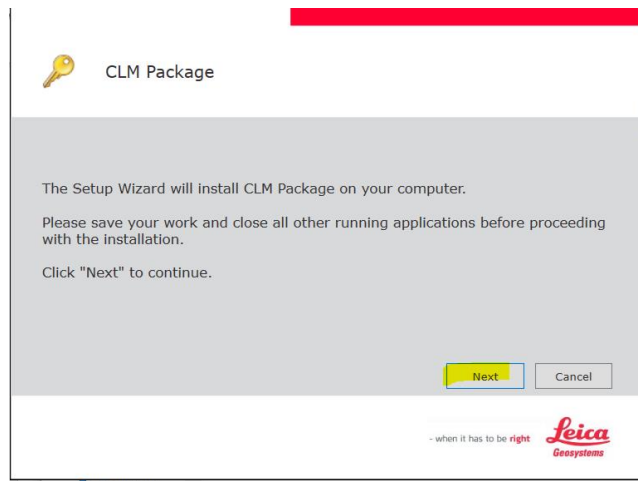
2. Install CLM update on the Server and Workstations

- Download the CLM License Manager from the link below.

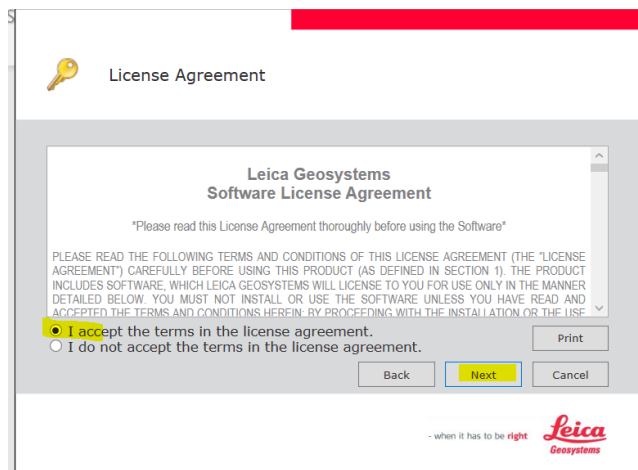
CLM 1.8.3000.3 Installer and License Guide:

<https://lgshds.sharefile.com/d-s1ead40452b842b88>

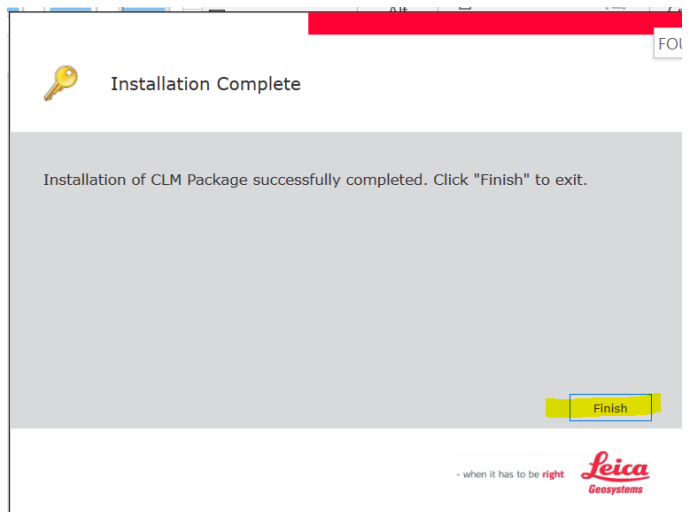
- Right-click on the clm_package_1.8.3000.3 installer and select “run as administrator”.
- The Setup Wizard will launch. Select “Next” to continue with installation.



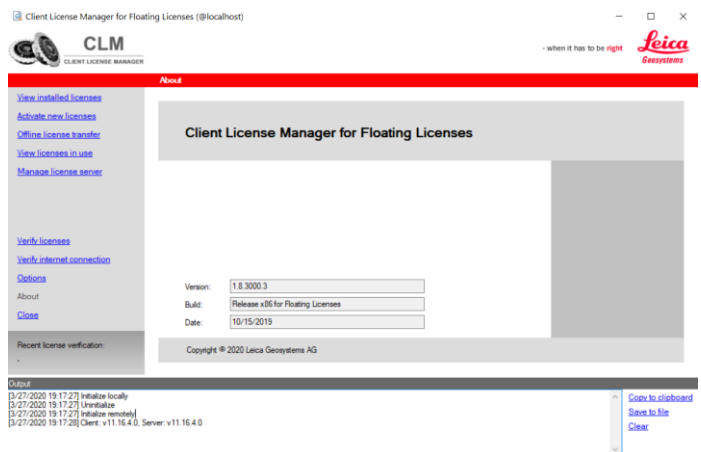
- Check “I accept the terms...” and then select “Next”.



- Then "Finish".



- Open the CLM for Floating Licenses and confirm that the version has been updated under "About".

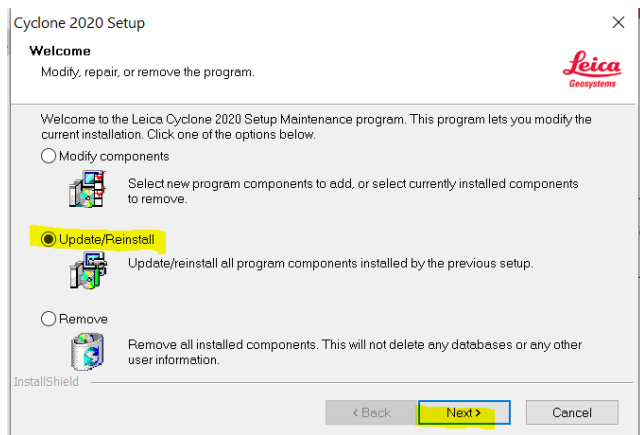


3. Update Cyclone to version 2020 on the workstations

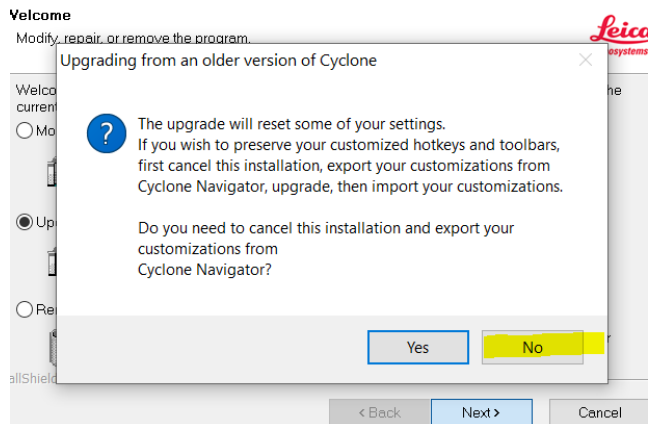
- Download the Cyclone 2020.0.0 installer from MyWorld, <https://myworld.leica-geosystems.com/iri/portal>, or the link below.

Leica Cyclone 2020.0.0 Installer and Release Notes:
<https://lgshds.sharefile.com/d-s3c2c812a1fb42f7a>

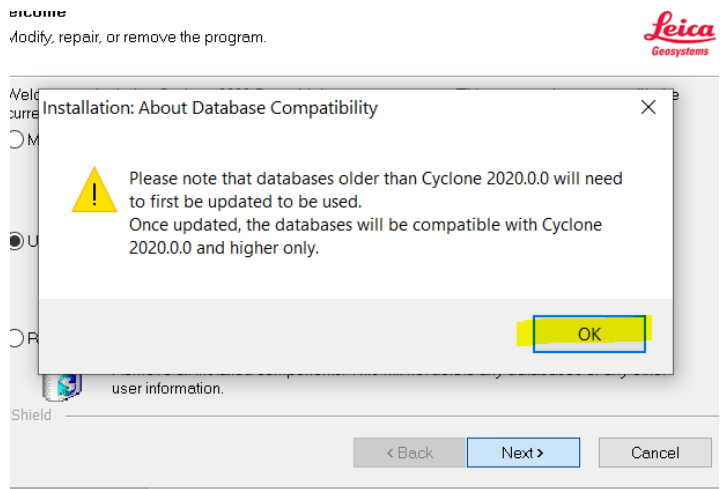
- Right-click on the Installer on your computer and select “run as administrator”
- Select “Update/Reinstall and then “Next”
- Confirm your customizations are backed up
- If they are backed up select “NO” to proceed with installation



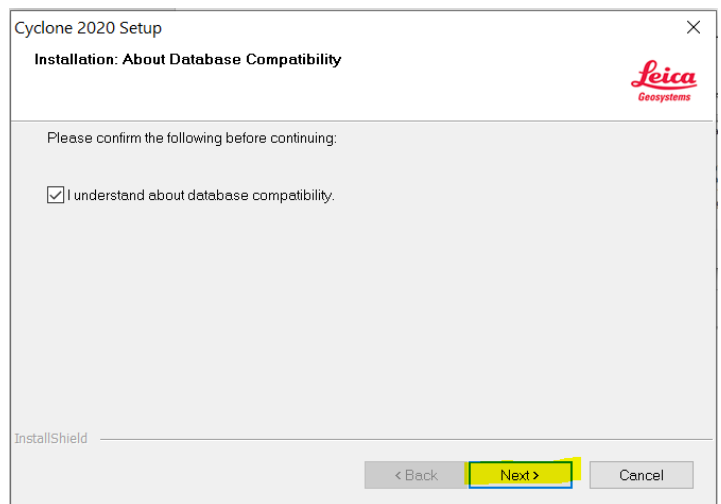
Note: If your customizations are not backed up select “Yes” to cancel install. You can save your customizations in the Cyclone Navigator under “Edit/Export Customizations”. Then run the installer once more.



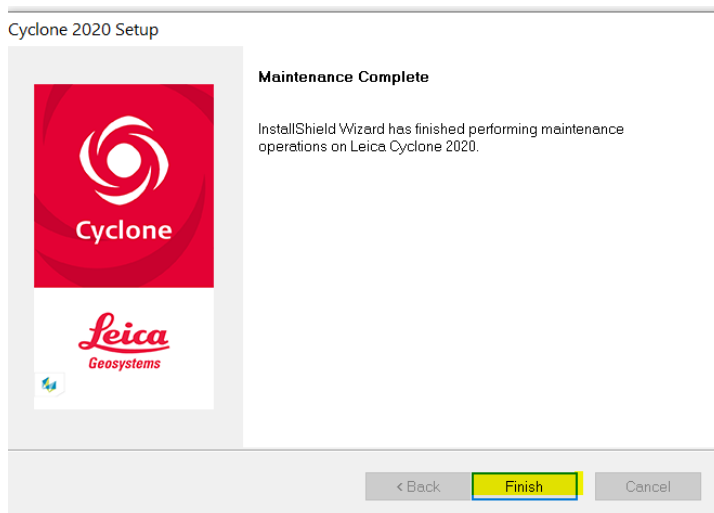
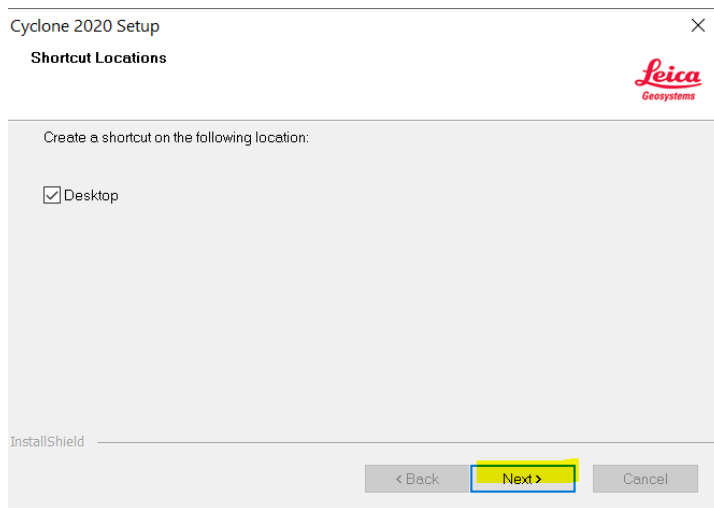
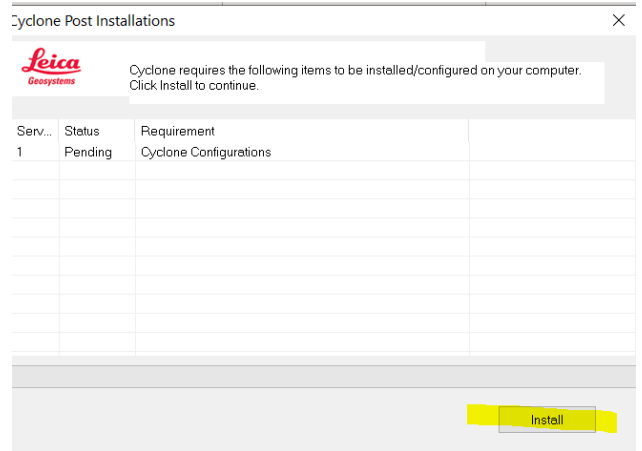
- Click “OK” to the message stating you will need to update your databases
- Check “I understand about database compatibility”
- Then “Next” to proceed with installation



Note: The database compatibility message is notifying you that your database will need to be optimized to version 2020.0.0 after installation



- Click “Install” to install any pending prerequisites”
- Check “desktop” to create shortcut
- Then “Next” to proceed with installation
- Then “Finish” to complete the installation.



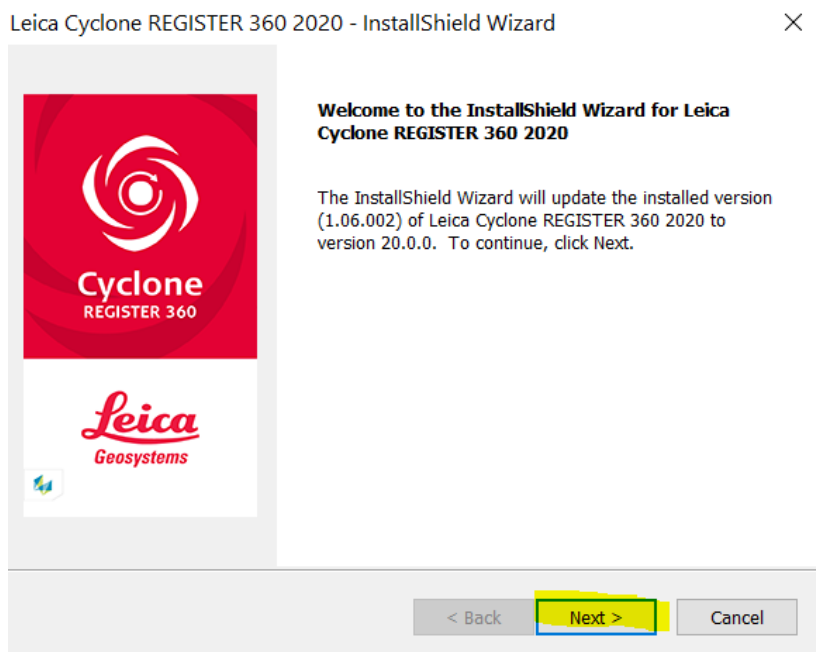
4. Cyclone REGISTER 360 update to 2020.0.0 on the Workstations

- Download the Cyclone REGISTER 360 2020.0.0 installer from MyWorld, <https://myworld.leica-geosystems.com/iri/portal>, or the link below.

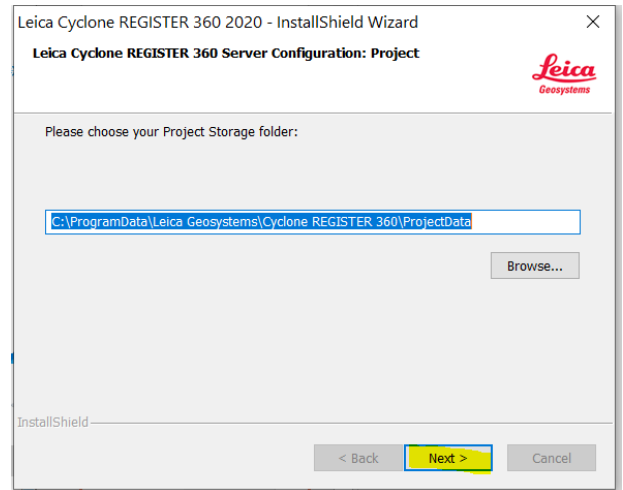
Leica Cyclone REGISTER 360 2020.0.0 Installer and Release Notes:

<https://lgshds.sharefile.com/d-sf8731677823477ea>

- Right-click on the Installer on your computer and select “run as administrator”
 - Click “Next” to Update the Software.



- Navigate to the Register 360 Project Directory if it is different than the default setting.
- Click “Next” to Update the Software.



- Select “Finish” to complete the update.

Note: The project storage folder is the directory used for all of your Register 360 projects. Select a location that has enough space. The space requirement for the Temp Directory and Storage is about 3 times the projects size. This can be changed under Projects & Storage after installation as well.

