

# Leica Cyclone – Installation Guide

(Version 2020.1.0, 12.17.20)

## Cyclone 2020.1.0 Installation

This quick guide goes over installing Cyclone on a Workstation using a license from an existing License Server

### Overview of Instructions

1. Cyclone 2020.1.0 Installation Steps
2. Verify Successful Installation

### 1. Cyclone 2020.1.0 Installation Steps

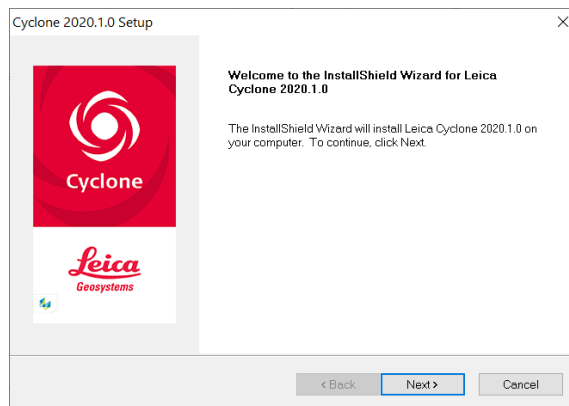
- Download the Cyclone 2020.1.0 installer from myWorld, <https://myworld.leica-geosystems.com/irj/portal>, or the link below.

Leica Cyclone 2020.1.0 Installer and Release Notes:  
<https://lgshds.sharefile.com/d-sefc4776ce654d578>

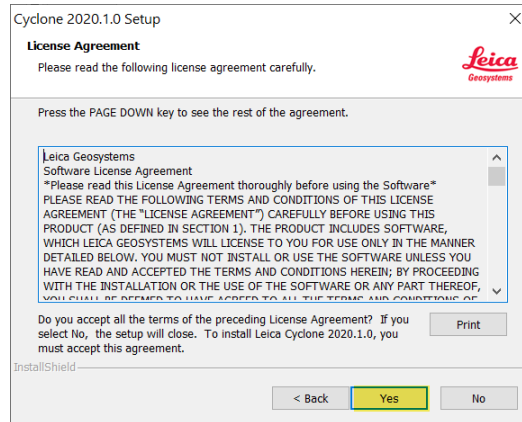
- Right-click on the Installer on your computer and select “run as administrator”



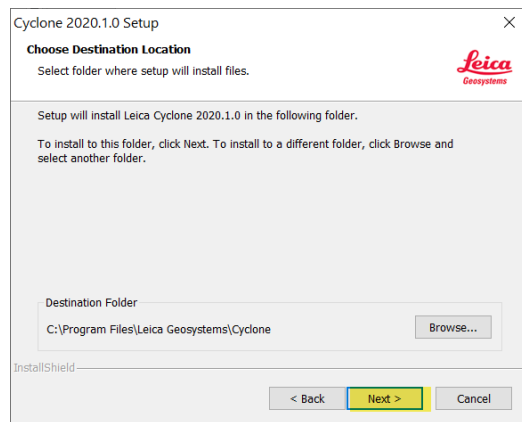
- The Cyclone 2020.1.0 Setup Wizard will launch
- Select “Next” to continue



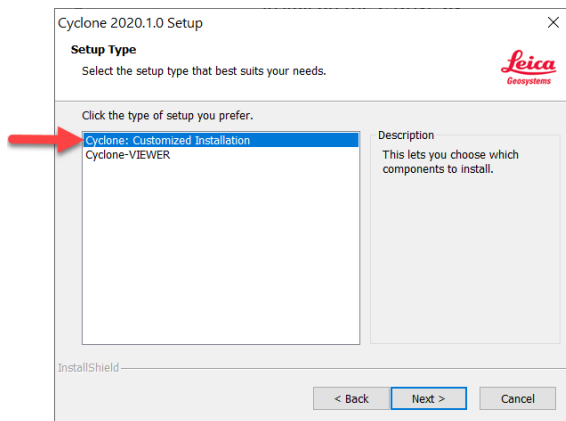
- If you agree to the License Agreement terms, select “Yes”



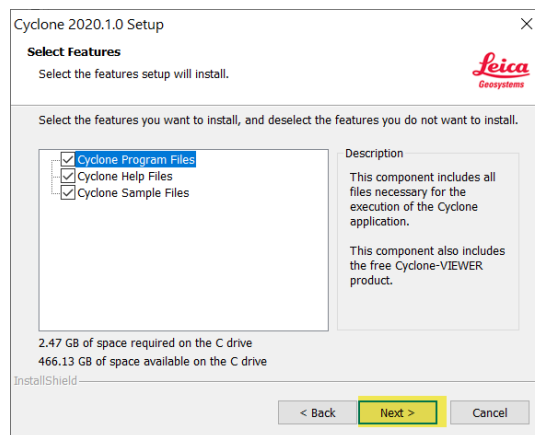
- Cyclone’s program files will install on the C Drive by default
- Click “Next”



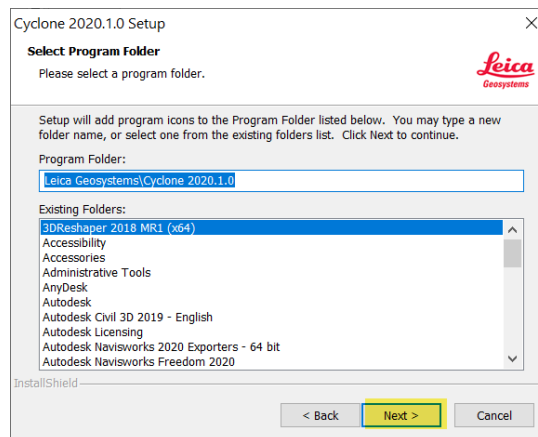
- Cyclone Customization Installation should be selected
- Then select “Next”



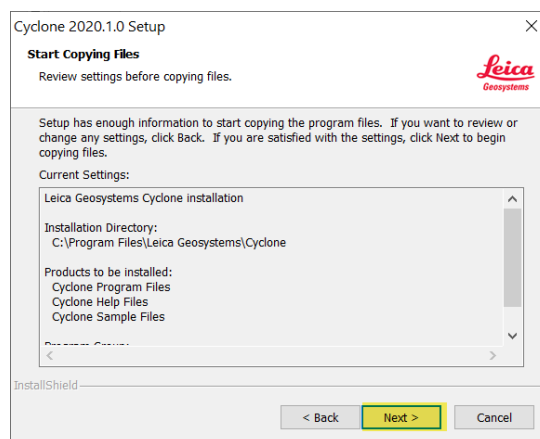
- Confirm all the features to install are selected
- Then select “Next”



- The Cyclone Program Folders are listed and can be modified if needed.
- Select “Next”

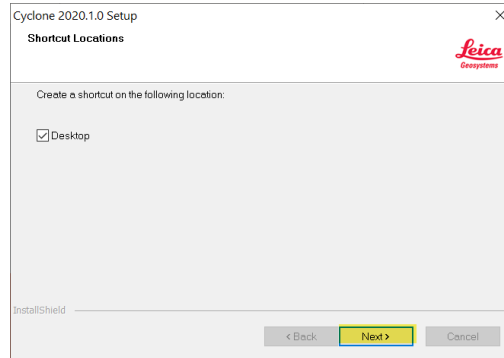


- The Cyclone Installer will now copy the files to the directories listed
- Select “Next”

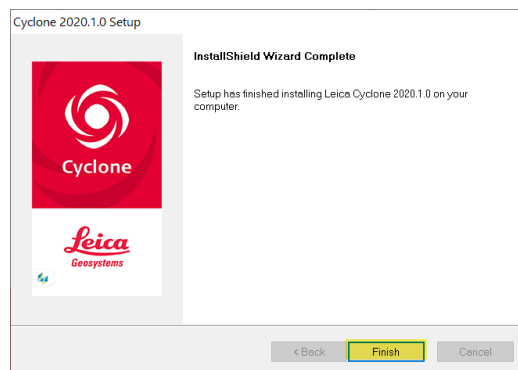




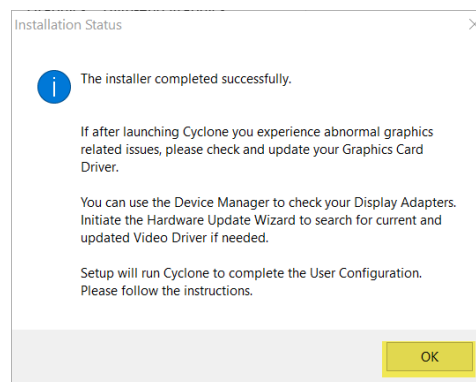
- Check “Desktop” if you would like a Cyclone icon on your desktop
- Then “Next”



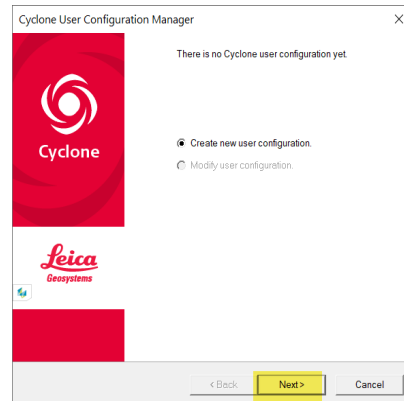
- Installation is Complete
- Select “Finish”



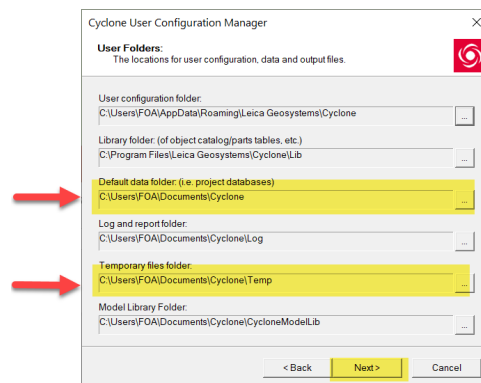
- Then “OK”



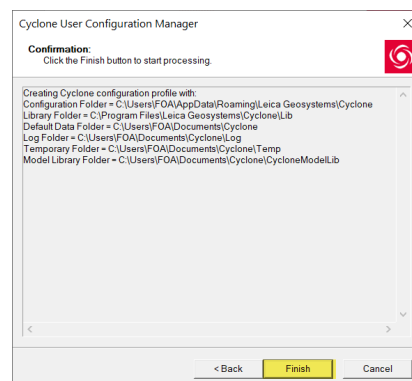
- Cyclone will now install your User Configuration Folders
- Select “Next”



- Cyclone’s **Default Data Folder** and **Temporary Directory** can be changed to another local drive if needed
- Once you have reviewed and/or changed any of the folders select “Next”



- Once the directories are created select “Finish”
- Then “Close”



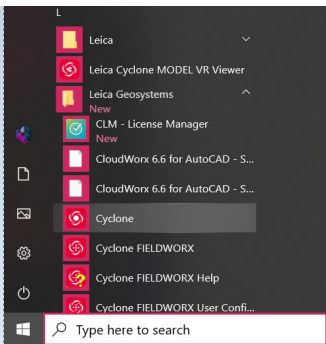
**Note:** Cyclone’s Temporary Directory has a space requirement of 3-4 times the size of the active project. If you do not have this space requirement on your C Drive, redirect the Temporary Directory to another local SSD with enough space for point cloud processing.

---

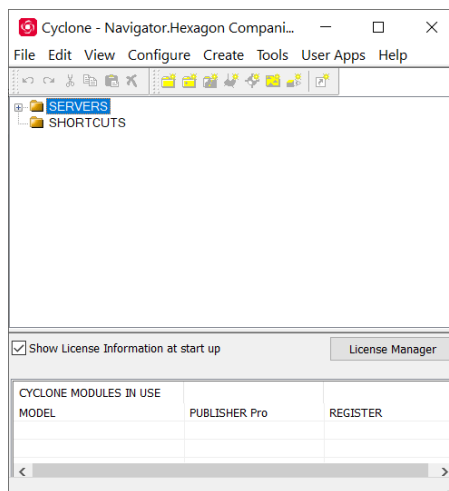
### 3. Verify Successful Installation

---

- Open the Cyclone App from start menu or the Cyclone shortcut



- The Cyclone Navigator will launch
- Check “Show License Information at start up” to display the licenses in use



**Note:** You can select “Help/View Installed Licenses” to verify the licenses are active and available. If Cyclone cannot find the license confirm the Server Name is correct under “Help/Set Switch License Server. You can also select “License Manager” to check the licenses you would like to use in Cyclone.