

# Leica Cyclone REGISTER 360 (BLK Edition) – Installation Guide

(Version 2020.1.0, 12.21.20)

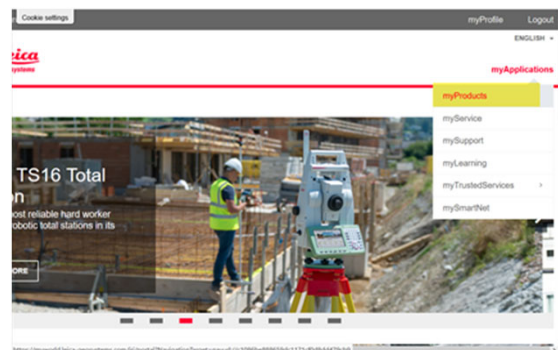
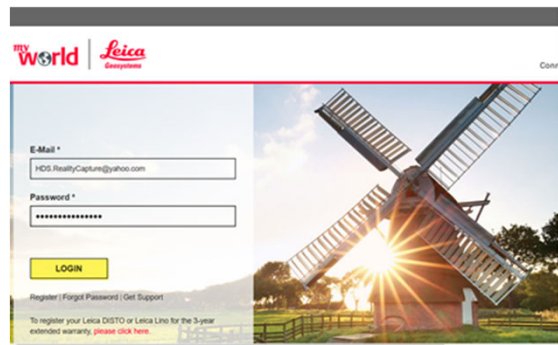
This quick guide goes over installing Register 360 (BLK Edition) on a Workstation.

## Overview of Instructions

1. Download Leica Cyclone REGISTER 360 (BLK Edition) from myWorld
2. Register 360 (BLK Edition) Installation Steps
3. Verify Successful Installation

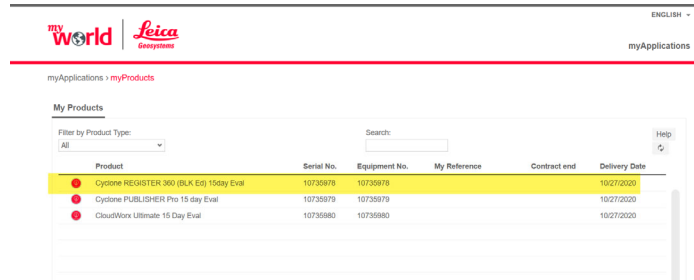
### 1. Download Leica Cyclone REGISTER 360 (BLK Edition) from myWorld

- Log onto myWorld, <https://myworld.leica-geosystems.com/irj/portal> \*
- Type in your E-Mail and Password and select “LOGIN”
- Select “myProducts”

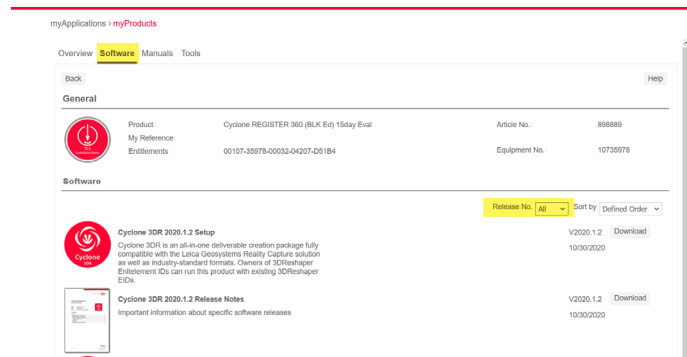


Note : \*If you do not have a myWorld account please create an account before updating your Software.

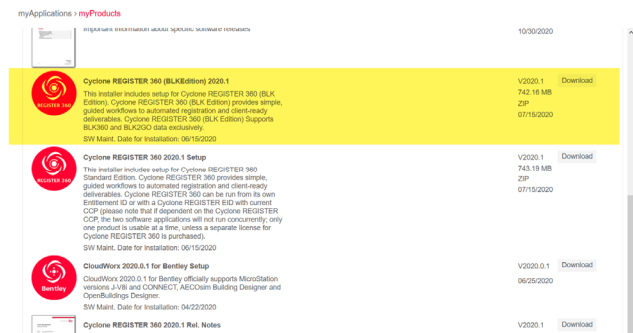
- Select your Product in the product list



- Select the “Software” Tab
- Change Release No. to “All”



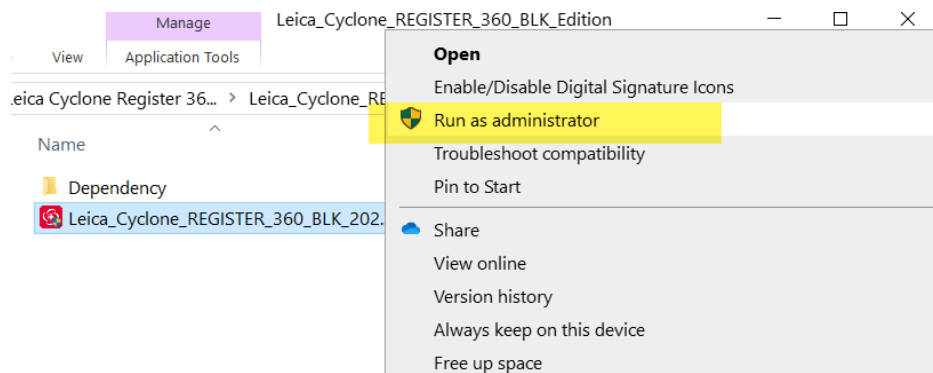
- Download the Software update for your product\*



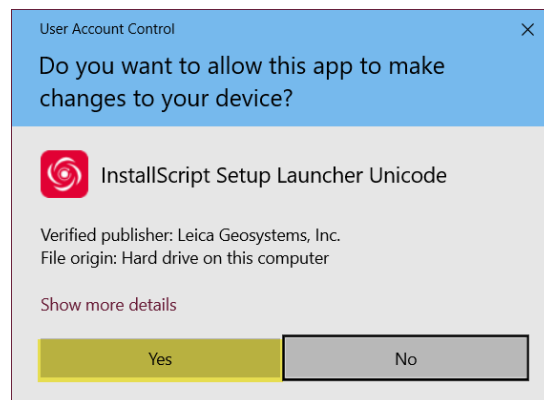
Note: \* myWorld will display a list of Software options to choose from. Select Register 360 (BLK Edition) from the list.

## 2. Leica Cyclone REGISTER 360 (BLK Edition) 2020.1 Installation Steps

- First copy the Leica Cyclone REGISTER 360 (BLK Edition) Installer to the workstations local hard drive and extract the installation package\*
- Then open the extracted folder and right-click on the Leica\_Cyclone\_REGISTER\_360\_BLK\_Edition\_2020.1.0.exe file and select “run as administrator”



- Select “Yes” to allow the Register 360 App to make changes to your computer.

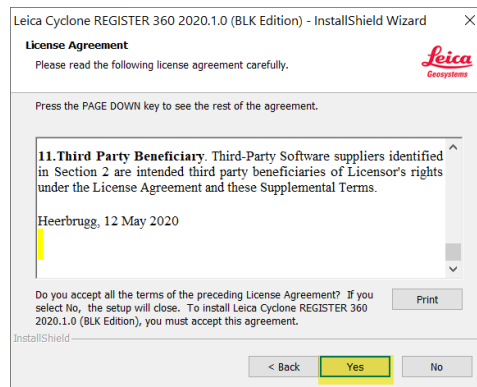


Note: \* When installing Cyclone REGISTER 360 (BLK Edition) make sure that the installation package is extracted to your local drive. The dependency folder will need to be in the same folder as the installer, Leica\_Cyclone\_REGISTER\_360\_BLK\_2020.1.0\_PGR\_15072020, to install the CLM License Manager along with the software.

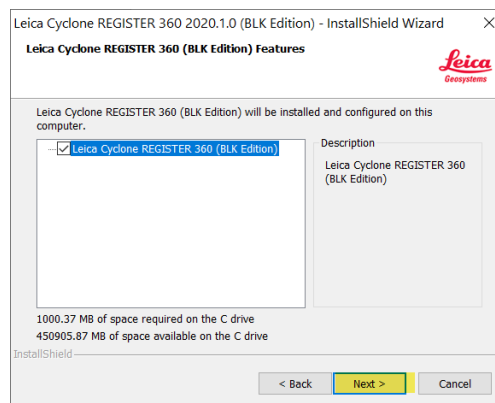
- The Register 360 (BLK Edition) Installation Shield will open
- Select “Next” to proceed with installation



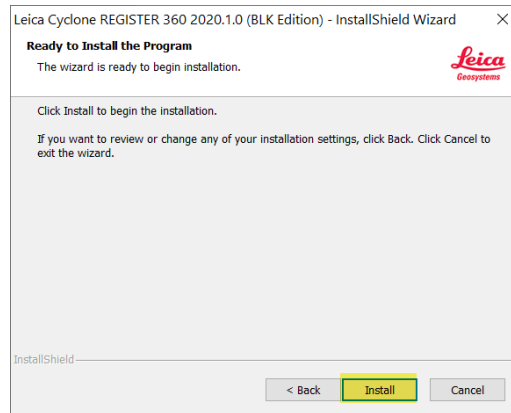
- Review the License Agreement
- Select “Yes” if you agree to the license terms



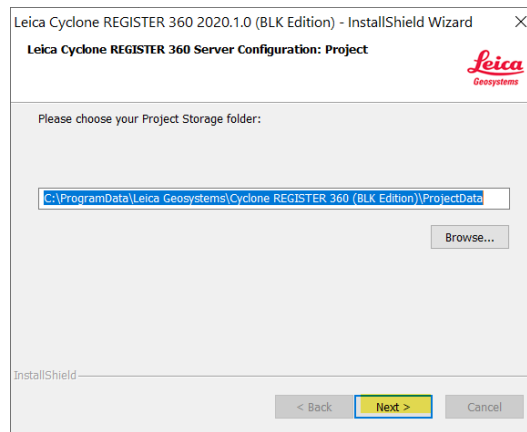
- Select “Next” to proceed with installation



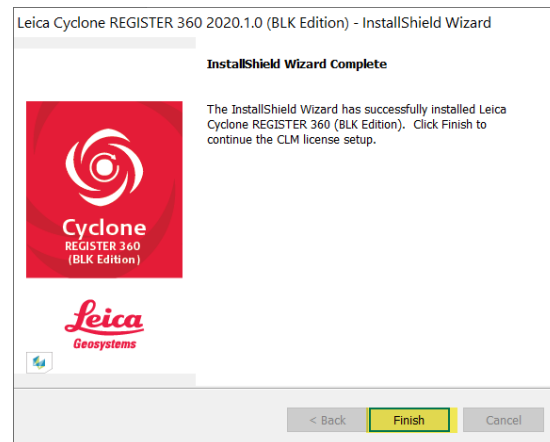
- Click “Install”



- The Project Storage folder location can be changed if needed. \*
- Select “Next”



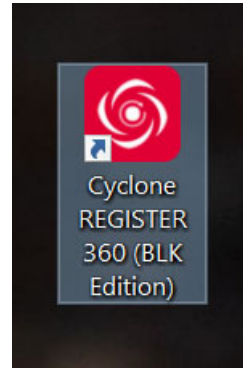
- Select “Finish” to complete the installation
- Then “OK”



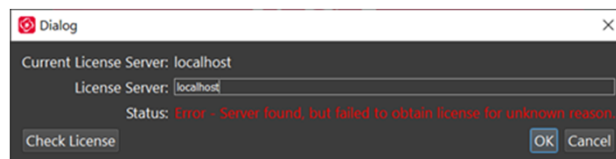
Note: \* The Project Storage Folder can be changed to another local Solid-State Drive with 2-3 times free space as active projects

### 3. Verify Successful Installation

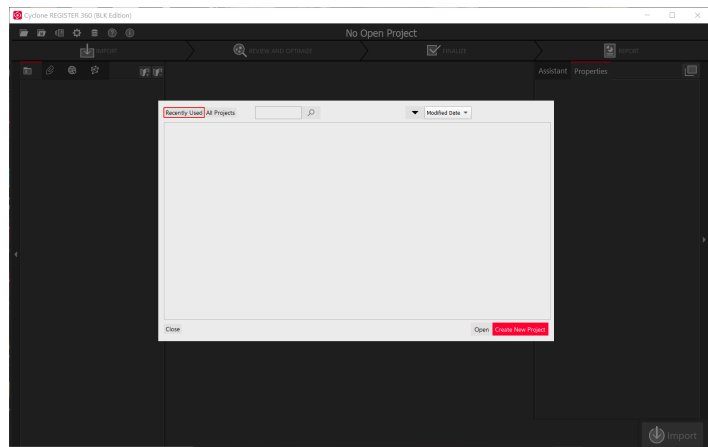
- Open the Cyclone REGISTER 360 App from the shortcut on your desktop or the start menu




- Type in the License Servers name. \*
- Then select "Check License"
- Once verified "OK"



- The Project Explorer will open and is ready for use.



**Note:** \* The License Server name is localhost if the Entitlement ID is activated on the workstation. If the license is activated on a License Server change the name either in this dialog box or in Settings  under the License Tab.