

CCP and Subscription Renewal

CLM v.2.5.x, HDS Software v.2021.x

12.08.21

Entitlement Update and Leica Cyclone Software Update

This is a quick guide that goes over installing the latest version of the CLM License Manager, updating your Entitlement IDs and HDS Software after a CCP renewal and auto-renewal of a subscription.

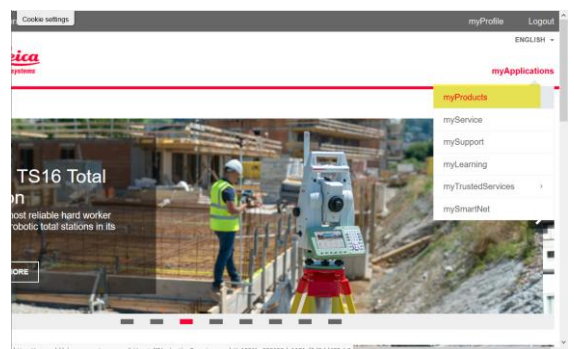
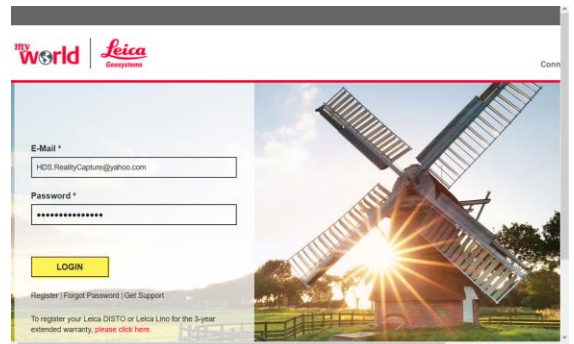
Overview of Instructions

1. Download the CLM License Manager and HDS Software from myWorld
2. Install CLM update on the License Server
3. Updating EID in the CLM - License Manager
4. Update CLM and the Software on the Workstations

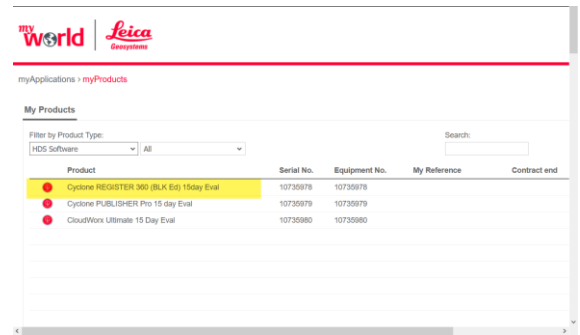
1. Download the CLM License Manager and HDS Software from myWorld

- Log onto myWorld, <https://myworld.leica-geosystems.com/irj/portal> *
- Type in your E-Mail and Password and select "LOGIN"
- Select "myProducts"

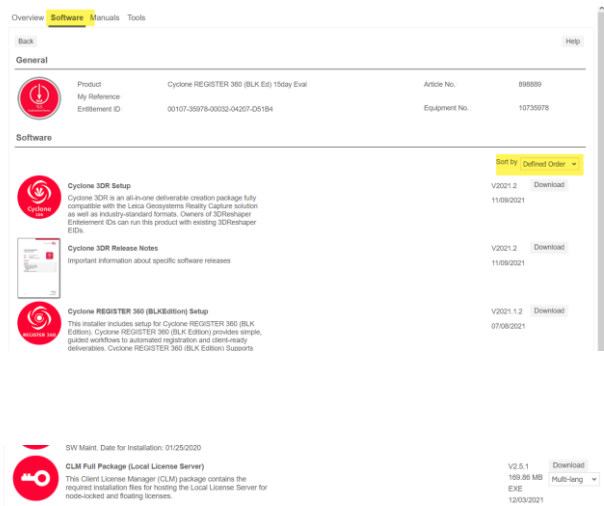
Note: * If you do not have a myWorld account please create an account before updating your Software.



- Select your Product in the product list



- Select the “Software” Tab
- Change Sort by to “Defined Order”
- Download the Software update for your product*

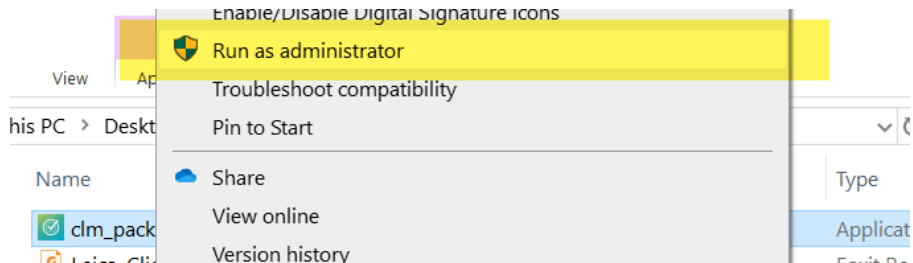


- Download the CLM Full Package (Local License Server)

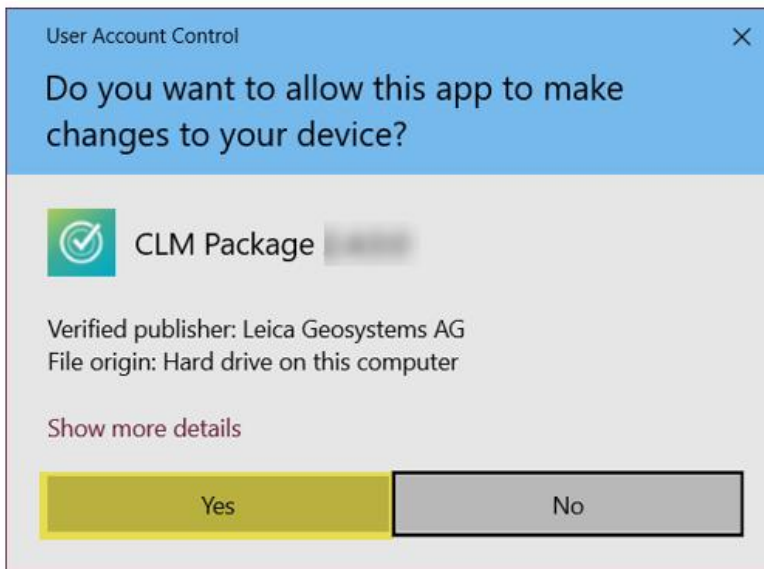
Note: * In this example My Entitlement ID is a Register 360 (BLK Edition) license. I will download only the Register 360 (BLK Edition) Software update along with the CLM Full Package.

2. Install CLM License Manager update on the Server

Copy the CLM Package to the Server's local hard drive. Right-click on the clm_package_2.5.x.exe and select "run as administrator"

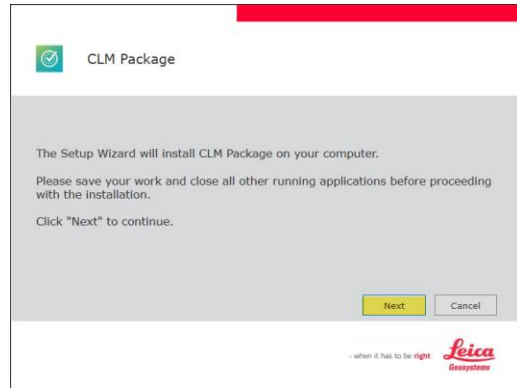


- Click "Yes" to Allow the app to make changes to your device and update the CLM Software



Note: If you do not have a License Server you can apply these steps to your workstation.

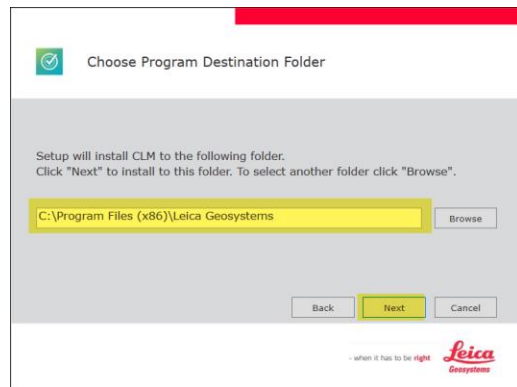
- Select “Next” to proceed with the update/install of the CLM License Manager



- Read the Terms of the Software Agreement
- Check “I accept the terms of the license agreement” if you agree
- Then select “Next”

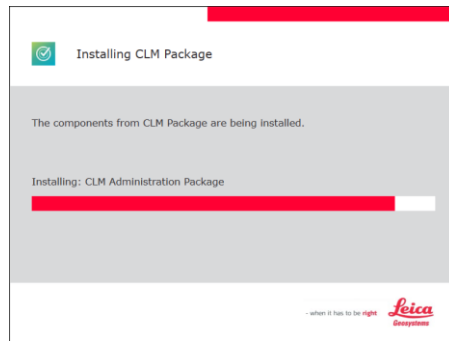


- The default destination folder for the program is on the C Drive*
- Select “Next”

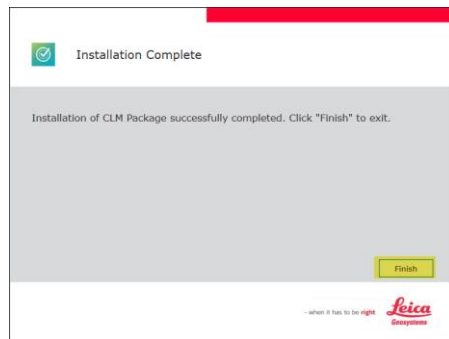


Note: *The designation folder can be changed to another local drive on the Server.

- The CLM Package is now installing the components

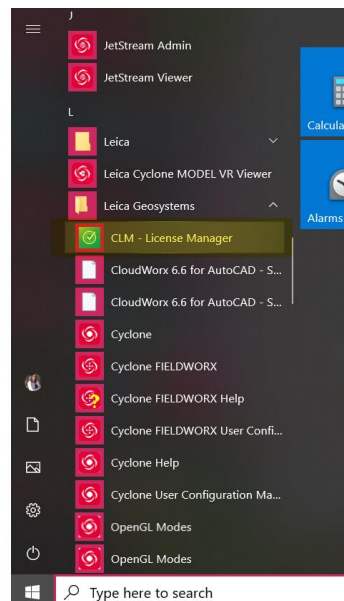


- Select "Finish" to complete the installation

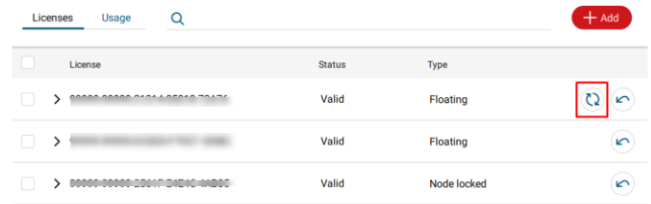


3. Updating EID in the CLM - License Manager

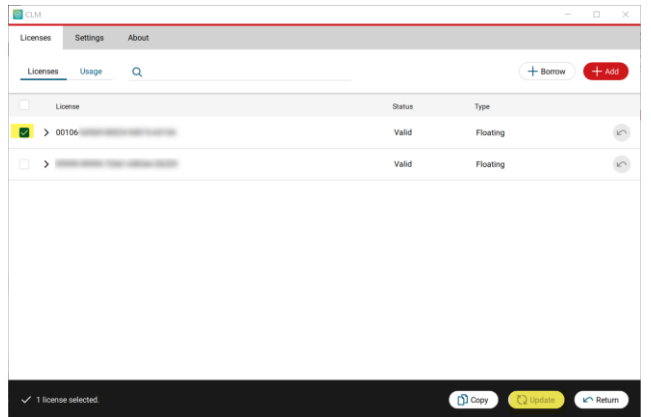
- Navigate to your Windows Start Menu
- Scroll down to "Leica"
- Select the CLM License manager



- The CLM will automatically check for renewals if there are pending



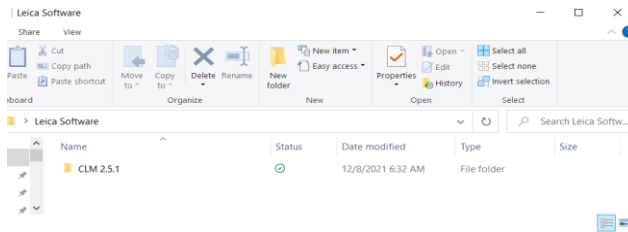
- Checked the EID
- Then select “Update” *
- CLM will ping the Leica Server for updates and apply the updated CCP or Subscription date



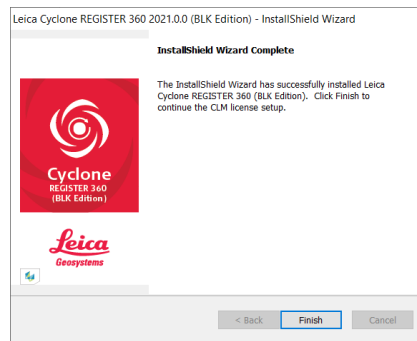
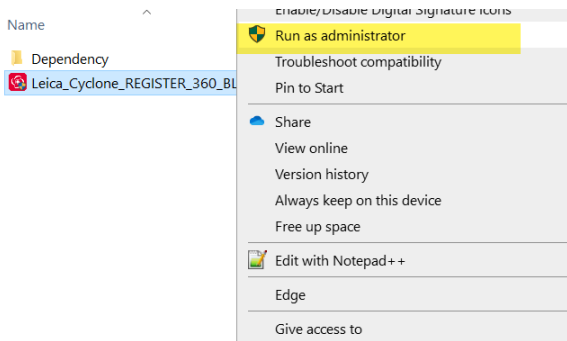
Note: *If there are License updates available the “Update” button will appear active. In this example my updates have already processed.

3. Update CLM and the Software on the Workstations

- Copy the CLM Package 2.5.x installer and the HDS Software for your Entitlement ID to the workstations local drive



- Install CLM on the workstation first by right-clicking on the installer select “run as administrator”.*
- Next install the HDS Software Update by right-clicking and selecting “run as administrator”. The update for Cyclone, Register 360 and Register360 (BLK Edition) will install without requiring an uninstall of the previous version.**
- Continue with installation and then select “Finish”.



Note: *The EID can only be activated in one location. If you are running CLM on a License Server, the EID does not need to be activated on the Workstation.

** This example is an update for Register 360 (BLK Edition). The same steps can be applied to Cyclone and Register 360. An older version CloudWorx will need to be uninstalled before installing the CloudWorx update to the workstation.