

Leica CLM – License Manager and EID Activation Quick Guide

(Version 2.5.x, 12.6.21)

This quick guide goes over installing CLM and activating an Entitlement ID on the License Server.

Overview of Instructions

1. CLM 2.5.x Installation Steps
2. Activate Entitlement ID
3. Activate Entitlement ID Offline

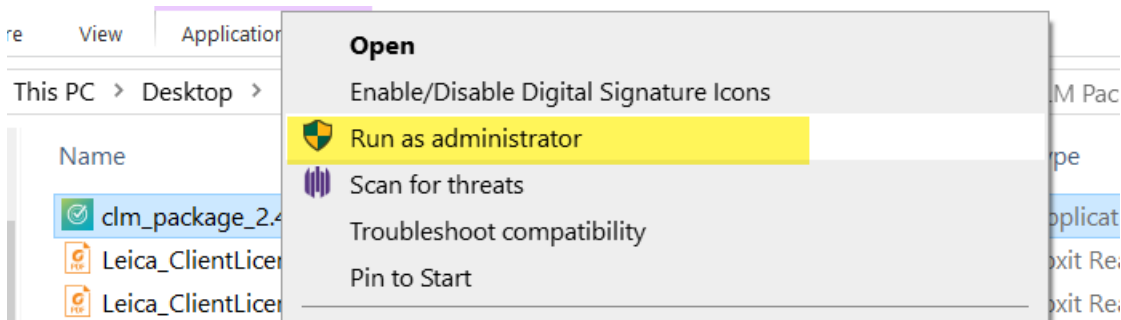
1. CLM 2.5.x Installation Steps

- Download the CLM installer from myWorld, <https://myworld.leica-geosystems.com/irj/portal> or the link below.

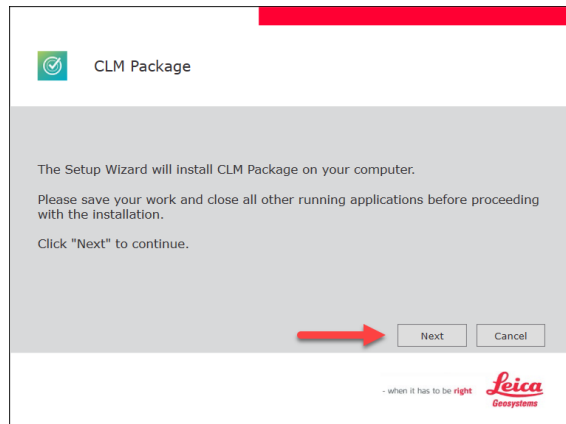
CLM 2.5.x Installer and License Guide:

<https://lgshds.sharefile.com/d-sa018b9cc1e824ec38bf964385043e9b1>

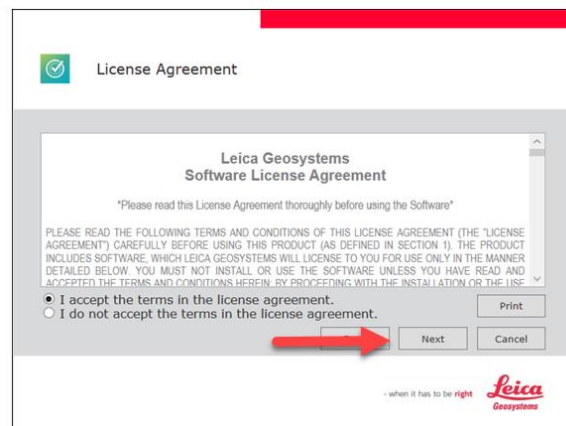
Right-click on the Installer on your Server and select “run as administrator”



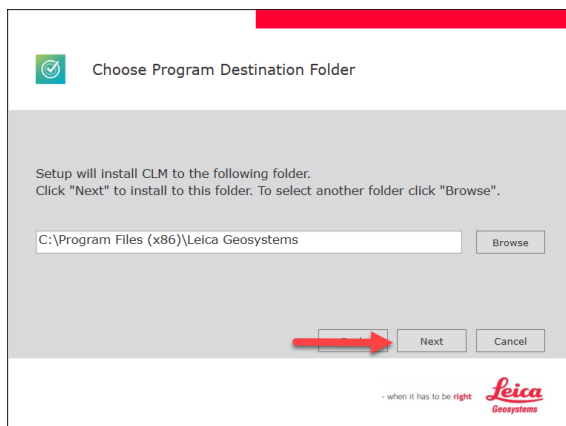
- The CLM Setup Wizard will launch
- Select “Next” to continue



- Read and click “I accept the terms in the license agreement”
- Click “Next”

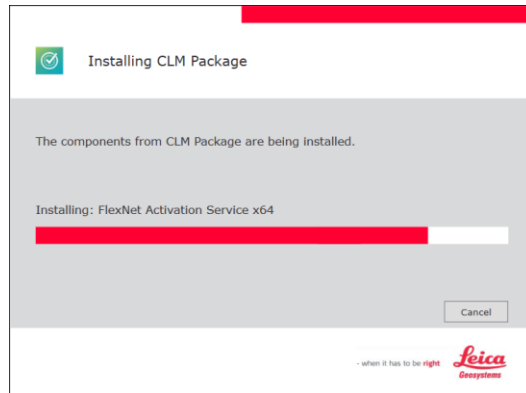


- Select “Next” to install CLM in the destination folder *

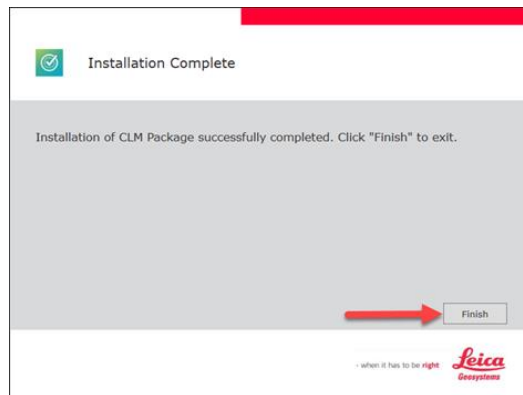


Note: *The Destination Folder can be changed to another folder on the Servers hard drive

- CLM will now proceed with installation

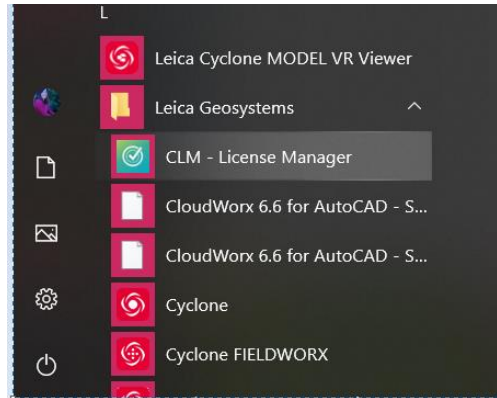


- Installation is complete
- Select "Finish"

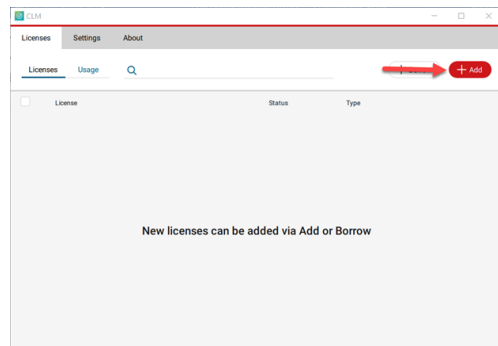


2. Activate Entitlement ID

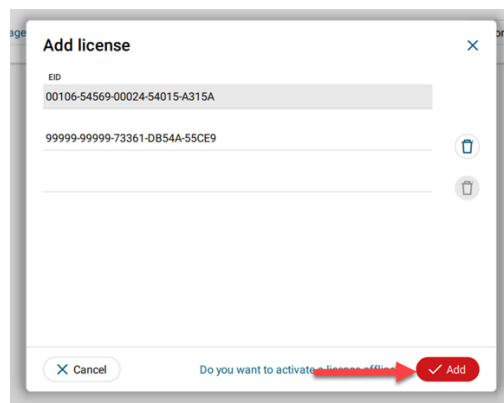
- Open the CLM - License Manager from your start menu



- Select "Add"

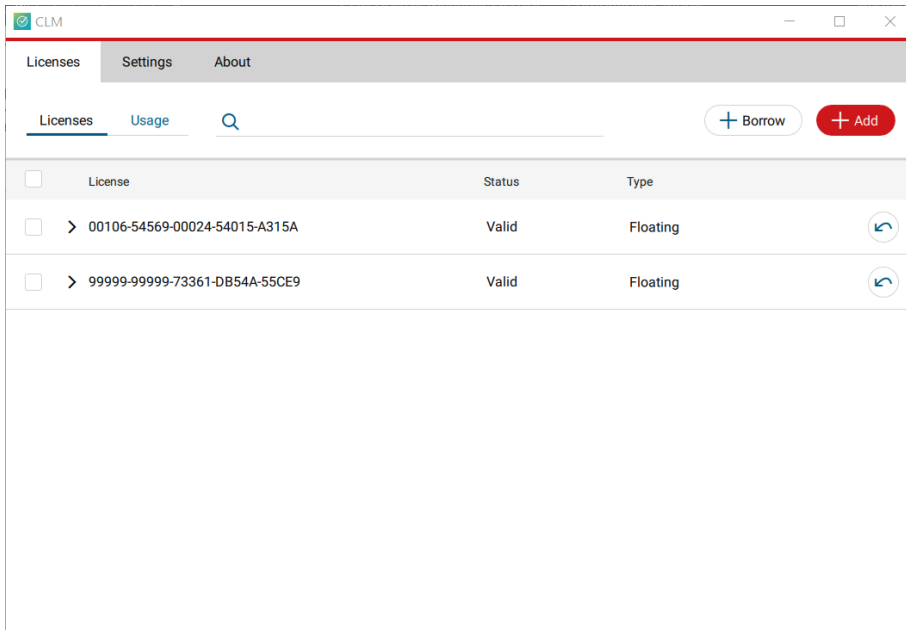


- Enter the Entitlement ID*
- Then select "Add"



Note: * Multiple Entitlement IDs can be activated at one time. Enter each EID and then click "Add"

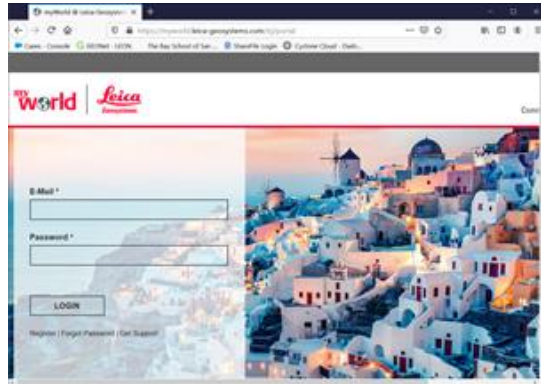
- After activating the Entitlement ID, the EID is listed under the Licenses Tab



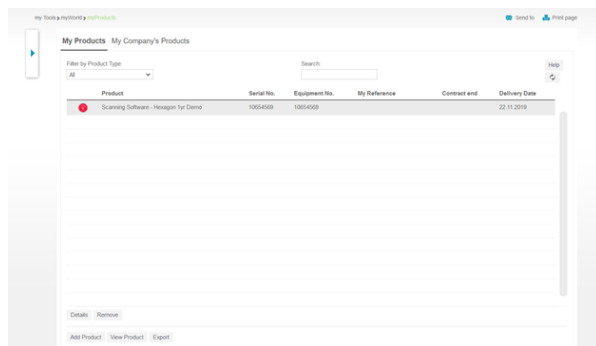
3. Activate Entitlement ID Offline

If the Server does not have an Internet Connection, please follow the Offline Activation process below

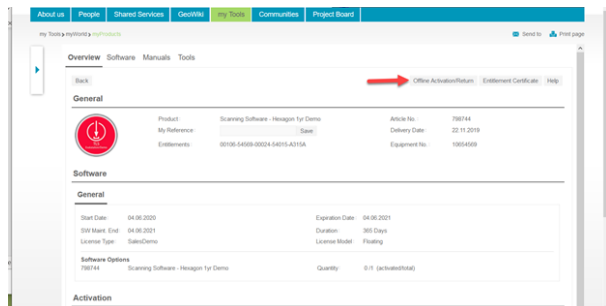
- Log onto your myWorld account
<https://myworld.leica-geosystems.com/irj/portal>



- Select the Entitlement ID in the product list to open the products overview*

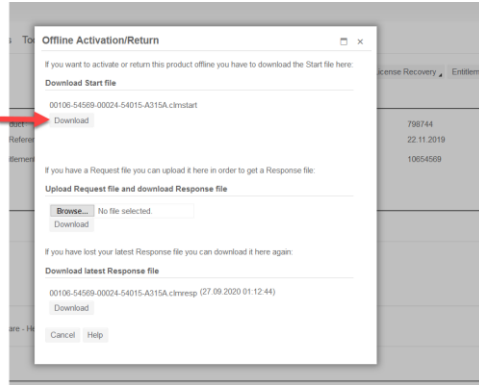


- Select "Offline Activation"

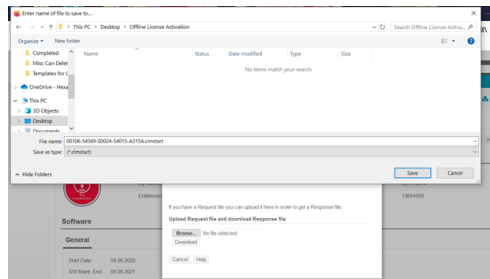


Note: *If your Entitlement ID is not listed under your product page, select "add" at the bottom on the page and add the EID as a Software Product

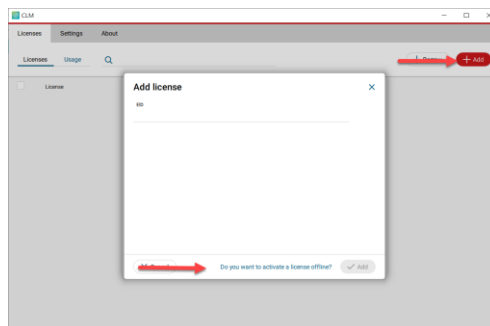
- Select “Download”



- Save the Start file “.clmstart” to a folder on the Server*

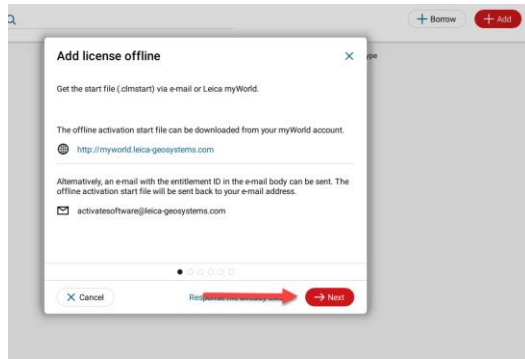


- Open the CLM and select “Add”
- Then select “Do you want to activate a license offline”

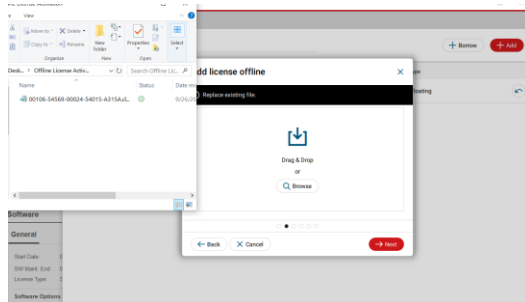


Note: *The Start file can be saved to a folder on the computer with Internet Access and then moved to a directory on the Server for offline activation

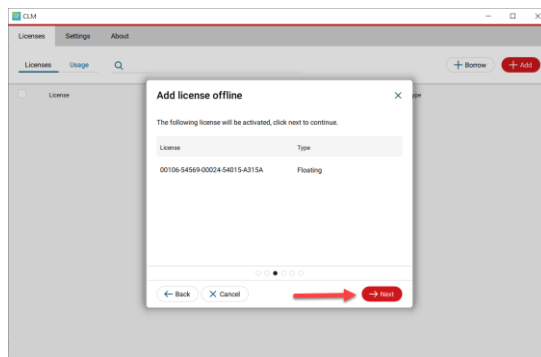
- Select “Next”



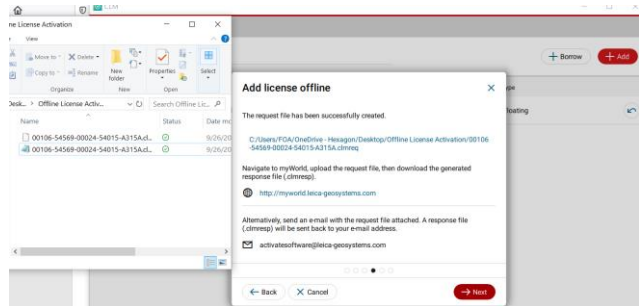
- Drag & Drop or browse to the “clmstart” file



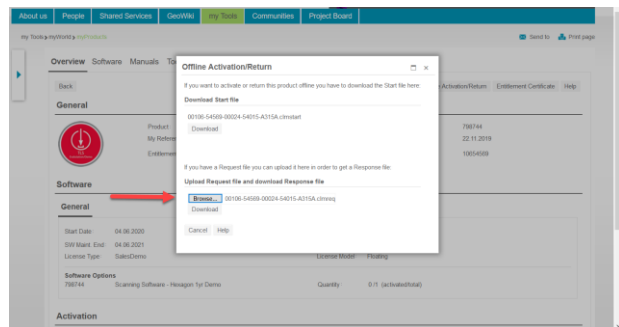
- Then select “Next”



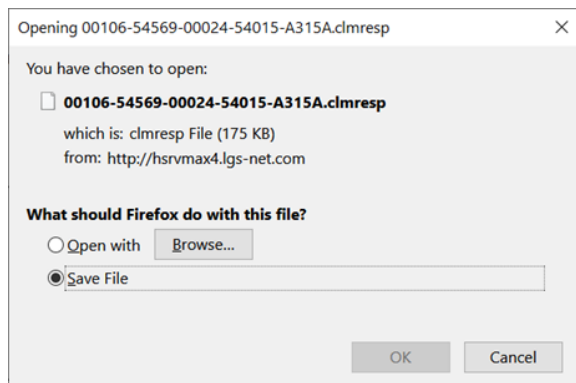
- The Request file “.clmreq” has been created



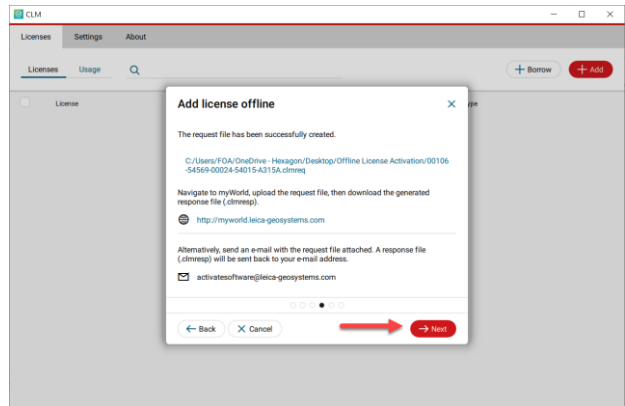
- Upload the Request file to myWorld



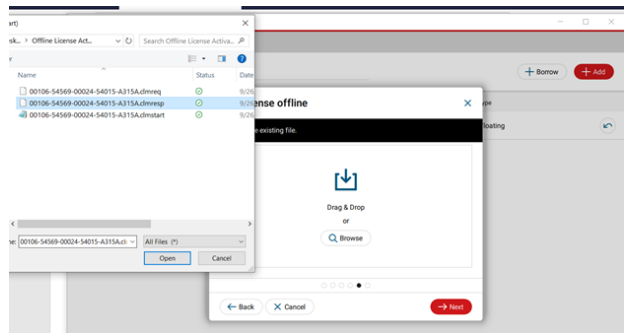
- Then select “Download” and Save the CLM Response file “.clmresp” in the same directory as the Start and Request file



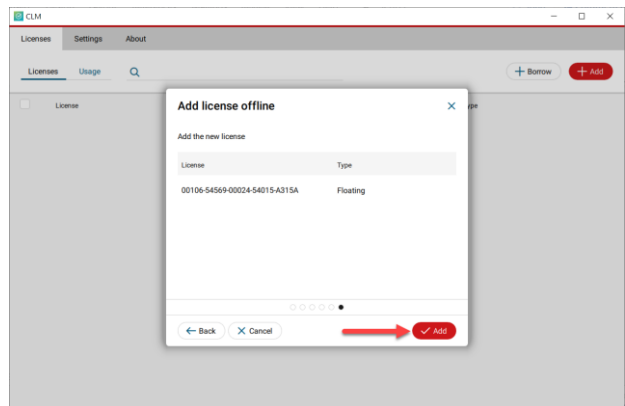
- In the CLM select “Next”



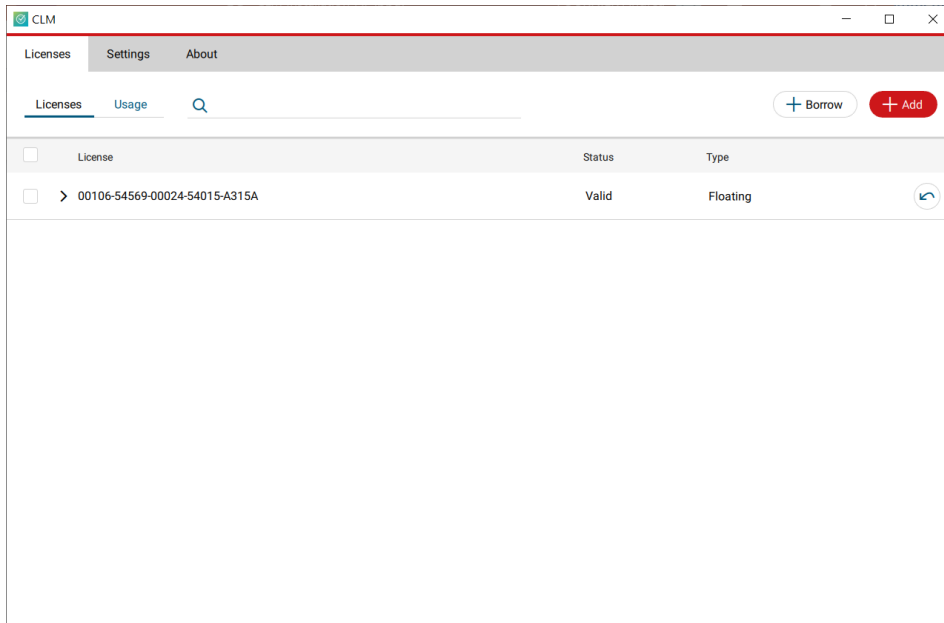
- Drag & Drop or browse to the Response file



- Then select “Add”



- After activating the Entitlement ID the EID is listed under the Licenses Tab



Note: If multiple Entitlement IDs need to be activated offline all of the start files can be processed on MyWorld at once. Then generate the request files one by one in CLM. Then generate all the response files on myWorld and add all the response files individually in CLM.