

License Borrowing Guide

(CLM version 2.5.x, 12.09.2021)

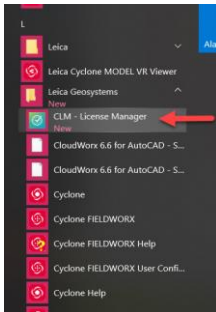
Borrowing a License from a License Server

This Quick Guide will cover borrowing a license from the License Server for use off the company network

The borrowing steps include

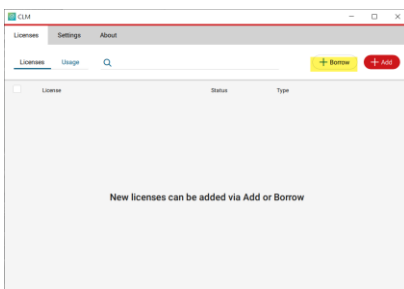
1. Opening the CLM License Manager
 2. Borrowing a License
 3. Confirmation of successful license checkout in the Software
 4. Return borrowed license
-

1. Opening the CLM License Manager

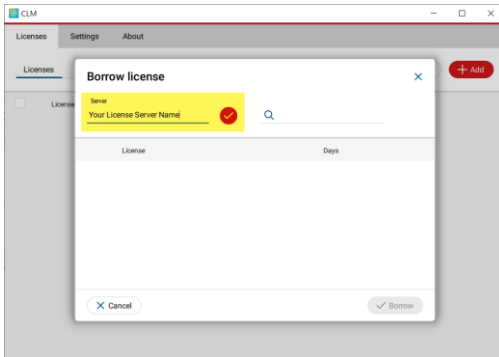


- Select your Windows Start Menu
 - Scroll down to the Leica Geosystems folder
 - Select “CLM License Manager”
-

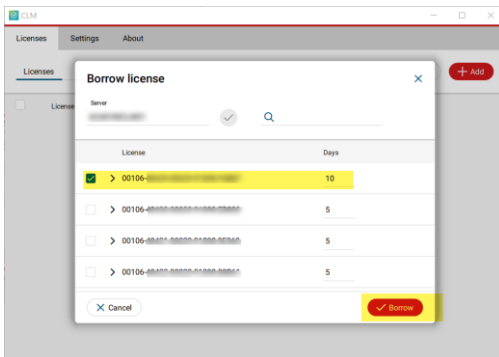
2. Borrowing a License



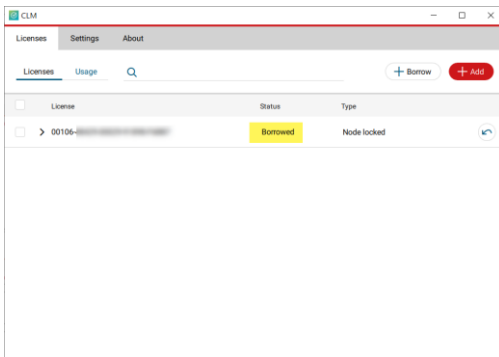
- Select “Borrow”
-



- Type in your License Server's name
- Select the red check mark



- Select the Entitlement you would like to borrow**
- Type in the number of days you would like to borrow the license
- Then select "Borrow"



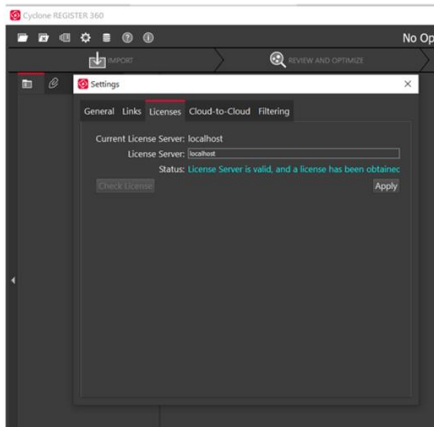
- The Entitlement ID is now listed in the CLM and the status has changed to "Borrowed"

** Note: If you are not sure which Entitlement ID is the license you would like to borrow select the drop-down arrow next to it to see the product details.

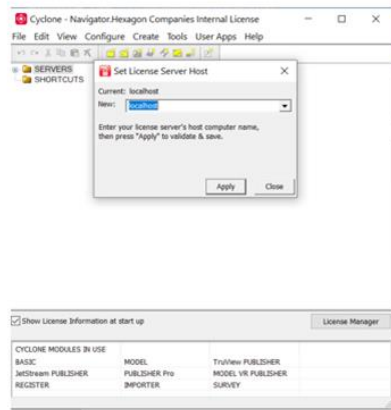
3. Confirmation of successful license checkout in the Software

Disconnect from the network and launch the Software. Change the License Server name from the License Server to “@localhost”. Please see examples below:

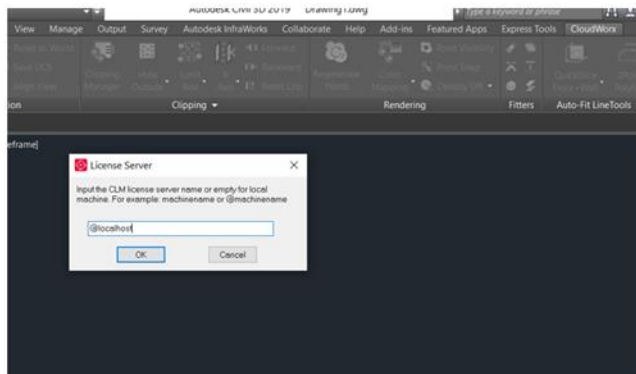
Register 360 change server name under Settings/Licenses:



Cyclone Change Server Name under Help/Set Switch Server:

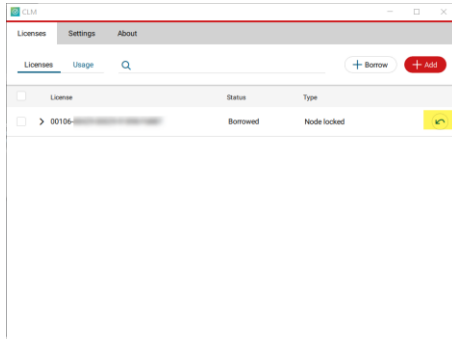



CloudWorx for AutoCAD type “cwlserver” in the command line and change the server name:

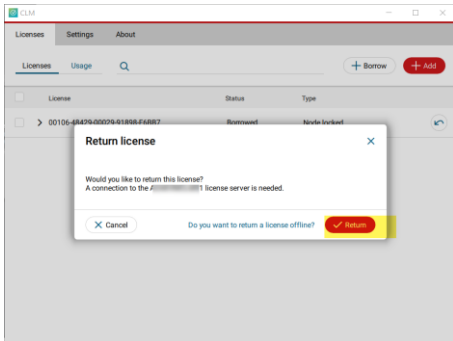


Note: If the License Server does not change you can change the name to @localhost under Start Menu/Leica Geosystems/Set License Server.

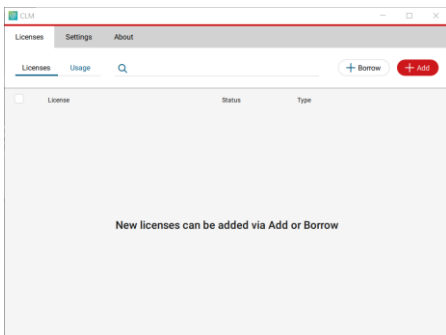
4. Return borrowed license



- Open the CLM License Manager from the Start menu
- Select the Return icon 



- CLM will ask if you would like to return the license back to the License Server
- Select “Return”



- The license has now been returned to the License Server